



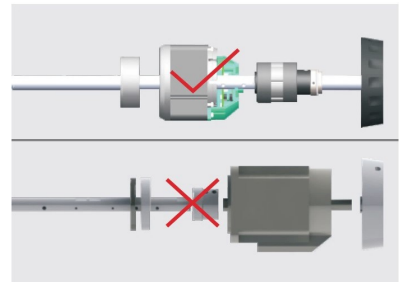
R2

品名：三自动电脑平缝机
Computerized Lockstitch Machine With
Three automatic Functions

特性：经济实用、稳定高效
Economical and practical, efficient and stable










出厂参数，一键复原
Factory reset



一轴贯通，稳定可靠
Coaxial driving, stable and reliable

技术参数 Specification

			 (mm)	 (mm)	 (S.p.m)	A	M	H	 (mm)	$\frac{NW}{GW}$ (kg)
R2-CZ	DB×1 11-18#	2	5	5-13	5000	●	●		671×248×550	34/42
R2-CZ-7	DB×1 11-18#	2	7	5-13	5000	●	●		660×248×550	34/42

注 (Note) :

标配自动剪线、自动倒回缝、电子夹线功能。

Auto trimming, auto reverse and electronic thread tension are equipped as standard.